

# Familiar 9 to 5 romp gets new life at Mountain Community Theater

By David Leland  
Press Banner

The cast of 9 to 5, The Musical — playing at the Mountain Community Theater in Ben Lomond weekends through Oct. 21 — takes a raucous comedic look at how three women fight for respect in a sexist workplace.

Directed by Daria Troxell — her fourth directorial effort at the theater — this delightful romp, set in 1979, weaves together the lives of Violet Newstead (MarNae Taylor), Judy Bernly (Sandi Lewandoski) and Doralee Rhodes (Morgan Peters) and follows how they get even with their boorish, unethical boss, Franklin Hart, Jr. (W. Scott Whisler).

The marvelous cast of 23 dedicated thespians sings and dances their way through boisterous situations that barrel toward a rewarding conclusion.

Through the use of brief blackouts, clever set changes support various scene environments to lift the catchy songs. Scenes include a steno pool, executive office, hospital floor and each woman's home life.

Whisler, playing Franklin Hart Jr., comes off as the perfect letch without a clue how absolutely inappropriate he is. It's worth the



David Leland/Press Banner

XJXJXJXJ: xjxjxjxjxjxj

price of admission just to watch him belt out "Here for You," while hamming up exaggerated body language perfect to match the lyrics.

Likewise, Roz Keith (Sarah Marsh), playing middle management on the make for her boss (Hart) who won't pay attention to her, nails her bold, almost-risque solo number "Heart to Hart."

Perhaps the highlight of the night is a dream-like

sequence in which each of the three leading ladies fantasize through song and dance the different ways they'd like to teach Franklin Hart, Jr. a lesson. We see "The Dance of Death," Cowgirl's Revenge," and "Potion Notion."

After being disrespected and humiliated, Violet, Judy and Doralee decide to kidnap Hart and trap him in his own house, while assuming control of his

department.

In 2008, the musical, written by Dolly Parton, won the Los Angeles Drama Critics Circle award for Best Musical Score, and in 2009 was nominated for four Tony Awards, including Best Musical Score.

Of course, the opening song, "9 to 5," sung by the entire cast to open the show was a smash radio hit and won a Grammy in 1982 for Best Country &

### If you go

- WHAT: 9 to 5, The Musical
- WHEN: Friday and Saturday 8 p.m. through Oct. 21, Sunday (Oct. 8 and 15) 2 p.m.
- WHERE: Park Hall, 9400 Mill St., Ben Lomond
- COST: \$25 General Admission, Students and Seniors \$20
- INFO: <https://mctshows.org>

### Western Song.

The seven-piece band, directed by Nicki Kerns, does a fine job backing up the singers, without ever drowning them out.

And, lastly, the choreography, overseen by Whitney James-Heskett, adds a crucial touch to the production, with basic musical comedy dance moves that allow the entire cast to be seen in unison.

9 to 5, The Musical is a great way to travel back in time realize the present isn't that bad.

Mountain Community Theater (MCT) is the longest-running community theater in Santa Cruz County, started in 1982 by a collective of actors. MCT is a member-run non-profit organization that relies on support from its performances, season subscribers, and royalties from its own company-created script, Miracle on 34th Street, the Play.



### Candus Shi Freshman

Freshmen SHVS golfer has received a medaled in all three matches this season leading team to a 3-0 start. Great job Candus Shi, Way to be an awesome Falcon!

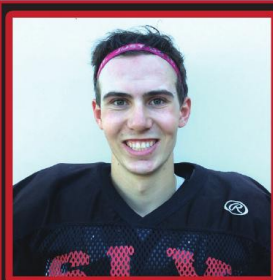
# FALCON OF THE WEEK

Sponsored by

## Tutoring Club<sup>SM</sup>

A Class Above. Guaranteed.<sup>TM</sup>

221-D Mount Hermon Rd,  
Scotts Valley Tel. 439-8886



### Trent Walker Senior

Senior captain, Trent Walker, kept his focus to lead the Cougars to a 29 - 3 victory over visiting Pacific Grove on Saturday, September 30th at San Lorenzo Valley's Homecoming game. The starting quarterback threw three touchdowns in the win and fulfilled his duties as a member of the Homecoming Court, including displaying some solid Salsa Dancing skills. Nice job Mr. Walker!

# SLV COUGAR OF THE WEEK

SPONSORED BY

## NewLeaf Community Markets

FELTON • BOULDER CREEK