



PRESENTS

Miracle on 34th Street

THE PLAY

Adapted by
Mountain Community Theater

from the novel by Valentine Davies.
Based upon the Twentieth Century Fox
motion picture Miracle on 34th Street.

Directed by Daria E. Troxell
November 22 - December 15



JAN 17 - FEB 16

16 plays, 2 shows, infinite fun

Thurs, Fri, Sat & Sun @ 8
Sat & Sun @ 2

TICKETS: \$35 / \$32

See BOTH shows for \$65 / \$60



1001 CENTER ST, SANTA CRUZ
santacruzactorstheatre.org/tickets



Presents

Miracle on 34th Street

THE PLAY

from the novel by Valentine Davies.
Based upon the Twentieth Century Fox
motion picture *Miracle on 34th Street*.

Directed by
Daria E. Troxell

November 22 - December 15, 2024

Park Hall • Ben Lomond, CA

The video and/or audio recording of this performance
by any means whatsoever is strictly prohibited

Produced by special arrangement with
THE DRAMATIC PUBLISHING COMPANY of Woodstock, Illinois

www.mctshows.org • info@mctshows.org • [@mctshows](https://www.instagram.com/mctshows)



Boulder Creek Pizza & Pub

is a proud supporter of
Mountain Community Theater.

Enjoy the show!



Dine In • Carry Out • Delivery

338 - 2141

www.bcpizzapub.com



9400 Mill Street
Ben Lomond, CA 95005
(831) 336-4777 www.mctshows.org

Mountain Community Theater (MCT) is the longest-running community theater in Santa Cruz County, started in 1982 by a collective of actors. MCT is a member-run non-profit organization that relies on support from its performances, season subscribers, and royalties from its own company-created script, *Miracle on 34th Street, the Play*.

Board of Directors

- President Susan McKay
- Vice-President Daria E. Troxell
- Treasurer Ann McCormick-Vickers
- Secretary Ana Bogren
- Park Hall Coordinator Albert Kent

Appointed Positions

- Box Office Managers Em Stewart, Ana Bogren
- House Manager Coordinator Delle Townsend
- Miracle Committee Chair Albert Kent
- Costume Coordinator Vacant
- Graphic Designer Sherri Goodman
- Subscriber Relations Michele Estrin-Gelblum
- Technical Director Dave Halper
- Volunteer Coordinator Delle Townsend
- Social Media & Public Relations Sarah Marsh
- Public Relations Susan McKay
- Diversity & Inclusion Maia Mosher-Yates
- Ad Sales Coordinator Peter Gelblum
- Website Sherri Goodman
- Ticketing Agent Ann McCormick-Vickers

DONORS

Thank You to Our Generous Donors for their support:

**Elsa Garmire and Bob Russell, Clay Teramo and Jennifer Scicluna,
Susan and Ian Walton, Carolyn and Robert Levering, Corinne and Todd Wipke,
Kathryn Chetkovich, Douglas Plante, Deborah Donner,
Karl Auerbach, Barbara Kaiser, Anonymus**

Families and individuals who have included MCT in their Estate Planning:
Michael and Susan McKay, Scott and Mollie Whisler

If you are interested in learning more about becoming a Legacy Donor or would like to donate now, please contact Michele Estrin-Gelblum at 831-703-4370 or michele.estrin@gmail.com.

Mountain Community Theater is a 501(c)(3) corporation, and all donations are tax deductible to the full extent permitted by law.



Come to Joe's in downtown Boulder Creek for live music 4 nights a week, pool tournaments every Thursday and your favorite team on the screens. Our friendly bartenders will be happy to see you.

HAPPY Every Weekday
HOUR from 5pm-7pm



Find us at DrinkatJoes.com or like us on Facebook for band schedules and more.

NOTE FROM THE MCT PRESIDENT

Happy holidays and welcome to our theater. Today we bring you MCT's very own miracle, a play written by some of MCT's founders! I hope that this heartwarming production will remind you of the magic of Christmas and the spirit of the season. Our subscribers are what keep us going year after year. If you are a current subscriber, thank you and I look forward to seeing you next year for our 43rd season. If you are not a subscriber, I invite you to subscribe—it's easy to do from our website, or you can scan the QR code on page 11 that will take you directly to the subscribe page on our website. Our play selection committee has put together a wonderful season for next year and we cannot wait for you and your friends to join us.

Speaking of friends, word of mouth is one of the best ways to get the word out about Mountain Community Theater, so tell a friend about *Miracle on 34th Street, the Play*, and encourage them to come and see it with the entire family! Feel free to leave us a review on our Google page or post on our Facebook page. And don't forget to follow us on Instagram (@mctshows) or on Facebook (<https://www.facebook.com/mctshows>).

Finally, I'd like to give a huge thank you to the 2024 Board of Directors: Daria E. Troxell, Ann McCormick-Vickers, Kenda Landers, and Albert Kent. I'd also like to thank Peter Gelblum, immediate past president, for his council and guidance. I could not do my job as President without them. I'd also like to give a shout out to our appointed officers who work tirelessly behind the scenes to make MCT run efficiently and smoothly. We are a community of volunteers who love to bring theater magic to you!

Wishing you joy and laughter and miracles,

Susan McKay, *MCT President*



Deborah J. Donner

Broker ~ DRE#00498325



YOU'LL
LOVE
MOUNTAIN
LIVING.

THE ROAD HOME
BEGINS WITH US.



Let's chat about your dream: 408-395-5754

www.donnerland.com

DIRECTOR'S NOTE

Faith is believing in things when common sense tells you not to.

Welcome to Mountain Community Theater and the eleventh staging of our very own adaptation of *Miracle on 34th Street*, or more specifically, *Miracle on 34th Street, the Play*. We are grateful to have you here with us as we embark on a contemporary interpretation of this story.

This is one of my favorite times of the year. I start this season off by watching *Home for the Holidays*. Every Christmas Eve, our tradition is to watch *Scrooged*, *Elf*, *Arthur Christmas*, *The Santa Clause*, *Santa Clause 2*, *Love Actually*, and – starting at 9:58 p.m. – *Die Hard* (yes, it is a Christmas movie). These films remind me about the importance of giving to others, which is the true spirit of the season. Not necessarily material things, but the giving of our hearts to, and the demonstration of compassion for, our fellow man. And, truth be told, **I believe in Santa Claus**, just ask my kids. I follow the Norad tracker on Christmas Eve, and on Christmas morning the stockings are full and there are gifts from Santa Claus. I have no idea where they come from.

This play also reminds me of the things that really matter. Right now, we need to have faith in our fellow humans. For my own sanity, I need to hold in my heart that what we do here, in this magical space of the theater, is making the world a better and brighter place, and that we can love and have compassion for one another. And maybe, just maybe, we can believe in a little elf-magic.

I am grateful for the **INCREDIBLE** cast and production team that have come together to work on this show. People have poured their hearts and souls into making this production a reality.

THANK YOU SO MUCH!! As the saying goes, it takes a village, and this journey has been wonderfully sublime.

We hope you enjoy our 2024 telling of this time-honored tale.

Happy Holidays,

Daria E. Troxell, *Director*



Since 1988

Running Electric

Residential

Commercial

Industrial



Electrical Contractor

935 Hillcrest Drive

Felton, CA 95018

Ph. 831-335-9024

Fax. 831-335-9256

Pg. 408-288-0509

E-Mail: runelect@ihwy.com

John C Fasolas

Lic # C-10-544065

MCT VOLUNTEER SIGN-UP

Our productions are successful, and our organization is sustainable, due to the high volume of volunteers who **donate** their time to bring world-class theatrical productions to our community. Here's a sampling of the ways you can get involved:

**Actor • Backstage Crew • Concessions Assistant
Costume Designer • Lighting Designer • Master Electrician
Master Carpenter • Program Ad Sales • Props Master
Set Designer • Stage Manager • Usher**

Interested in getting involved?

Scan the QR code, fill out our volunteer sign-up form, and we'll be in touch.



We look forward to having you involved!

MCT MISSION STATEMENT

Mountain Community Theater is dedicated to maintaining a spirit of creativity, collaboration and fun in all that we do. We produce plays and events that are recognized for their artistic excellence and taken as a whole, our productions are financially self-sustaining. Our seasoned artisans provide an environment that embraces and encourages the artistic growth of aspiring future thespians.

LAND ACKNOWLEDGMENT

The land on which we gather is the unceded territory of the Awaswas-speaking Uypi Tribe. The Amah Mutsun Tribal Band, composed of the descendants of indigenous people taken to missions Santa Cruz and San Juan Bautista during Spanish colonization of the Central Coast, is today working hard to restore traditional stewardship practices on these lands and heal from historical trauma.

**PROUD TO SUPPORT
THE LOCAL ARTS**



BUSY BEES
— CAFE & CATERING —

BUSYBEESCAFECATERING.COM
831-854-2212 CAFÉ
831-435-6411 CATERING
1200 41ST AVE. SUITE B, CAPITOLA

CAST

(in order of appearance)

Doctor Pierce	BETTY GADDAM
Kris Kringle	PETER GELBLUM
Street Person	CHELSEA LEONE
Rich Person	SUSY PARKER
Shellhammer	SARAH MARSH
Doris Walker	SONIA MOTLAGH
Susan Walker	LUCY SKY LEVY-LONGINI
Fred Gayley	SCOTT HAWKLYN
Drunken Santa	GARY LEPORI
Child No. 1	GIANA HORTON
Child No. 2	SAVANNAH RUWE
Sharon	ADELINE McLAUGHLIN
Sharon's Parent	KATE LONGINI PRATT
Joanie	SAVANNAH RUWE
Joanie's Parent	COREY SPADACCINI
Dutch Girl	IRIS McLAUGHLIN
Foster Parent	CHELSEA LEONE
Megan	BEATRICE DeGREEN
Megan's Parent	SUSY PARKER
Macy	BRAD ROADES
Sawyer	STEVE CAPASSO
Bloomngdale	COREY SPADACCINI
Finley	ZACH CALDEN
Judge Harper	CHRISTINA WISE
Mara	ANN McCORMICK-VICKERS
Newscaster	SUSY PARKER
Halloran	MAIA YATES
1st Pedestrian	CHELSEA LEONE
2nd Pedestrian	SUSY PARKER
3rd Pedestrian	KATE LONGINI PRATT
Duncan	ROB WOJTASIEWICZ
Janet Mara	GIANA HORTON
Al	MATHEW CHIPMAN
Lou	GARY LEPORI

WE MEASURE • WE 3D SCAN • WE CUSTOM FIT

UGG


new balance

BIRKENSTOCK


FLY HUMAN FLY

**BECK'S
SHOES**

SHOES THAT WORK

rack



Thorogood



MERRELL

Blundstone
TASMANIA AUSTRALIA 1970

12550 CA-9 • BOULDER CREEK • 831/703-4307

NOW OPEN @ GILROY OUTLETS • 408/767-2052

ELVES
(in order of appearance)

Elf Z CALI SPADACCINI
Elf Q AUTUMN ROBERTS
Elf J WILLIAM CALDEN
Elf R BENJAMIN ROTTE
Elf W RILEY BISGAARD
Elf V LOUIS NASH
Elf B BEATRICE DeGREEN

UNDERSTUDIES

Kris Kringle JACKSON WOLFFE
Fred Gayley ZACH CALDEN
Susan Walker GIANA HORTON
Shellhammer. CHELSEA LEONE
Finley MATHEW CHIPMAN
Al COREY SPADACCINI
Street Person & 1st Pedestrian ROB WOJTASIEWICZ
Elf Q BENJAMIN ROTTE
Elf R LOUIS NASH

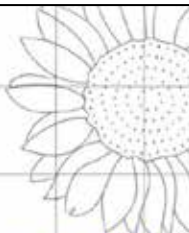
“Santa Claus is Coming to Town”

Arrangement by Bruce Springsteen
Written by J. Fred Coots and Haven Gillespie,
and first recorded by Harry Reser and His Orchestra

SETTING

Various locations throughout New York City
Thanksgiving Day through Christmas Day, 2024

***** There will be one 15-minute intermission *****



BUSY BEES PLAYSCHOOL OFFERS A SAFE AND WARM ENVIRONMENT FOR YOUR CHILD TO GROW. OUR CURRICULUM IS CHILD CENTERED AND FOCUSED ON HANDS-ON EXPLORATION. WE ENGAGE IN OUTDOOR PLAY AND USE NATURE TO HELP GUIDE OUR LEARNING.



BusyBeesMichelle@gmail.com
831.251.0921

Monday - Thursday
Split day options available
9:00am - 1:00pm

Located a mile up from town in Boulder Creek



PRODUCTION TEAM

Director	Daria E. Troxell
Production Manager	Wyatt Troxell
Vocal Director	MarNae Taylor
Stage Manager	Siidney Bobisuthi
Technical Director	Lars Fabiunke
Master Carpenter	Mark Hoagland
Costume Coordinator	Jaden Lopez
Lighting Designer	Wyatt Troxell
Props Master	Tricia Davie
Set Designer	Lars Fabiunke
Sound Designer	Karen Siebald
Scenic Artist	Kate Longini Pratt
Assistant Stage Manager	Gail Meyer
QLab Operator	Paul Faraone
Backstage Crew	Christina Alvarez, Zach Calden Rosemary Hayward, Cory Nash Aspen Petersen & Corey Spadaccini
Set Painting & Construction	Mark Hoagland Kate Longini Pratt, Laurie Becker Mark Becker, Ben Bobisuthi, John Hawklyn Dusty Horton, Meg Lehr, Deborah McLaughlin Jane Wohlhueter, and the Cast & Crew
Headshot Photographer	Lyle Troxell
Poster & Artwork Designer	Mardeen Gordon
Program Designer	Steve Goodman
Program Ad Sales	Peter Gelblum & Cast
Publicity Coordinator	Susan McKay
Social Media Coordinator	Sarah Marsh
Conflict Resolution Officer	Mitch Plott

PARK HALL
A Public Trust, Since 1923



Park Hall Mill Street Ben.Lomond, Ca. 95005

Park Hall is the home of Mountain Community Theater and...

... Little People's Repertory Theatre

... Where the Fur Flies

... Jordan's Hair Studio

Park Hall is a community resource available to YOU

To rent Park Hall for your next event visit

<https://parkhall.benlomond.org> or contact Park Hall's Manager at
parkhall.communitycenter@gmail.com or 831-246-6374

Have a great class or lecture to offer the community? Contact us!

SPECIAL THANKS

Park Hall Trustees & Staff
St. Andrew's Episcopal Church
Laurie & Mark Becker
Ben Bobisuthi
Mathew Chipman
Mark Hoagland
Lars Fabiunke
Gary Lepori
Albert Kent
Kate Longini Pratt
Sarah Marsh
Susan McKay
Marcel Tjioe, Cabrillo College
Ben Lomond Post Office
SLV Theatre Department
and

All of the local businesses who support our productions!

Scotts Valley Performing Arts presents



Fri. Dec 6th Through Sat Dec 14th

At the Scotts Valley Performing Arts Center

For tickets - go to www.svpashows.org.

**Or point your mobile phone
camera at the QR Code >**





BISGAARD



CALDEN, W



CALDEN, Z



CAPASSO



CHIPMAN

THE CAST!



DeGREEN



GADDAM



GELBLUM



HAWKLYN



HORTON



LEONE



LEPORI



LEVY-LONGINI



LONGINI PRATT



MARSH



MCCORMICK-VICKERS



McLAUGHLIN, A



McLAUGHLIN, I



MOTLAGH



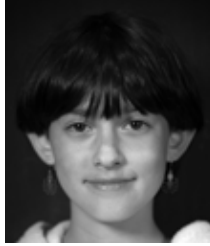
NASH



PARKER



ROADES



ROBERTS



ROTTE



RUWE



SPADACCINI, CALI



SPADACCINI, COREY



WISE



WOJTASIEWICZ



WOLFFE



YATES





— SANTA CRUZ —
SHAKESPEARE
presents

*A Christmas
Carol*

November 23 - December 24
Santa Cruz County Veterans Memorial Building

For tickets & info:

santacruzshakespeare.org

Or Scan the QR Code to reserve your seats:



CAST BIOS

RILEY BISGAARD (Elf W) is a senior at San Lorenzo Valley High School, and this is her second production of *Miracle on 34th Street, the Play!* She got to be an elf in the 2018 production, and is so happy she gets to do it again! Other productions she's been in are *The Little Mermaid* with All About Theater (2019), *Get Your Kicks On Route Yellow Bricks!* (2020), and most recently *Love, Death and the Prom* with Renegade Theater Co. this past summer. She hopes you enjoy the show!!

WILLIAM CALDEN (Elf J) is appearing in his first show with MCT, but hopefully not his last. He has participated in LPRT, Charter plays, and is currently in the SLV Theatre Department production of *Grease*. He is excited to take on the role of Elf J, whom he thinks is swell.

ZACH CALDEN (Finley, Fred Understudy) is really thrilled for you to see him in his first stage performance and is extra thrilled to be doing this show along with his son William.

STEVEN CAPASSO (Sawyer) is an actor, playwright, and improviser. He has performed in several MCT productions, including *The Viewing Room*, *One Flew Over the Cuckoo's Nest*,

Miracle on 34th Street, the Play (2018), *August: Osage County*, and *The Last Noel*. He also performs with Actors' Theatre and Cabrillo College. He is a member of 36North, a Playwright's Collective.

MATHEW CHIPMAN (Al, Finley Understudy) still feels that he's a newbie in theater, having only acted for about a year and a half, but he is incredibly grateful to all the wonderful and talented people in this community who make him feel welcome day after day.

BEATRICE DeGREEN (Megan, Elf B) is excited to be participating in her first MCT show. She has developed her love for musical theatre performance through the beloved LPRT program (*The Wizard of tOyZ* and *Snowdo White and the Fellowship of the Mirror*) and via the SLVUSD Charter play (*Welcome to the Jungle: A Jungle Book Story*). Christmas is her favorite season of the year; she loves baking gingerbread cookies and playing carols on the piano.

BETTY GADDAM (Doctor Pierce) looks forward to her first time performing with MCT. Her background includes years of community theatre experience as well as (most recently) volunteering with the LPRT productions here at Park Hall.

RENEGADE THEATER CO

2024-2025 SEASON



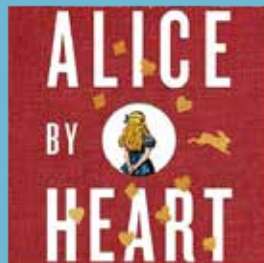
DECEMBER
AGES 12-17



JANUARY
1ST YEAR CELEBRATION REVUE



FEBRUARY
AGES 18+



MAY
AGES 13-19



JUNE
AGES 12-17



JUNE
18+ STAGED READING

CONNECT WITH US AT:
renegadetheaterco.org



PETER GELBLUM

(Kris Kringle) received his B.A. in Theater from Wesleyan University, then worked professionally as an actor and director in New York, Los Angeles, and Philadelphia for several years. Peter's acting roles range from Kris Kringle in MCT's 2010 and 2012 *Miracle* productions, to Brutus in *Julius Caesar*, to the head judge in Cabrillo's *Judgment at Nuremberg*, to a killer on *Kojak*. He has also directed regularly at MCT, including *August: Osage County*, *Vanya and Sonia and Masha and Spike*, *The Goat, or Who is Sylvia*, and *Miracle on 34th Street, the Play*, and at the Actors' Theater *8 Tens @ 8* Festival. In 2022, he created *The CZU Fire In Their Own Words*, a 90-minute film about people who lost their homes in, and fought, the August 2020 CZU Lightning Complex Fires.

SCOTT HAWKLYN (Fred Gayley) has been involved in theater on and off his entire life. Whether it was skits in his scout troop or shows at his high school, he enjoyed getting in front of people and making a fool of himself. Scott's first appearance on the MCT stage was in a pre-pandemic showing of *The Lion in Winter*. It wasn't until this summer's *Becky's New Car* that Scott returned to the stage, and he

is happy to continue that presence now in this showing of *Miracle on 34th Street, the Play*.

GIANA HORTON (Child No.1, Janet Mara, Susan Understudy) is thrilled and excited for her first MCT performance. She has a blue belt in Taekwondo and loves spaghetti. Her other performances were at BCE. In *Robin Hood* she was the Queen. In *Munchkin Mediation* she was the 5th Munchkin. She would like to thank her family and Sonia for all their support and encouragement.

CHELSEA LEONE (Street Person, Foster Parent, 1st Pedestrian, Shellhammer Understudy) was first introduced to theater by her oldest and now uses MCT as a form of therapy. :) It happens to be her second time in the *Miracle* show, this time with her youngest reprising Elf Q, just like their older sister! Favorite pastimes include daydreaming, playing guitar and singing, and walking through the woods. Chelsea loves to spend her time with her three amazing daughters and a variety of furry critters.

GARY LEPORI (Drunken Santa, Lou) has worked on sets for plays, but this is the first play he has acted in. He is very excited to be part of the MCT production.



All About
THEATRE



Dec 6th - Dec 14th 2024

Live on Stage At The Colligan Theater

Fri 12/6 @ 6:30pm

Sat 12/7 @ 1:30pm & 6:30pm

Fri 12/13 @ 6:30pm

Sat 12/14 @ 1:30pm & 6:30pm

Tickets \$18-\$28



Over 175 Musicals

www.allabouttheatre.org

831.345.6340

LUCY SKY LEVY-LONGINI (Susan Walker) is an actor, singer and dancer, who loves musical theater. She is glad to join the MCT family. Lucy recently played Matilda in SVCT's Roald Dahl's *Matilda The Musical* where she won the best lead actor youth award. She also recently played Bagheera in SLVUSD Charter's *The Jungle Book*, and Patty/Posey in LPRT's *The Wizard of tOyZ*. She can be seen in a few film projects. She loves hanging out with her friends & her cats, and enjoys playing volleyball, basketball, choreographing dances, and crocheting. You can also find her at the beach, most likely swimming in the ocean.

KATE LONGINI PRATT (Scenic Artist, Sharon's Parent, 3rd Pedestrian) has worked with MCT for many MCT shows including *Calendar Girls*, *Mamma Mia!*, *Something Rotten!*, *Monty Python's Spamalot*, *The Rocky Horror Show*, *The Lion in Winter*, *Young Frankenstein*, *The Madwoman of Chaillot*, *Moon Over Buffalo*, *Sordid Lives*, *The Humans*, *Evil Dead The Musical*, *A Flea in Her Ear*, *Julius Caesar*, *The Viewing Room*, *A Home for the Holidays*, *Now and Then*, *Footloose*, *The Robber Bridegroom*, *Miracle on 34th Street*, *the Play* (2012 and 2018), *The Odd Couple*, *Four Old Broads*, *Rapture*, *Blister*, *Burn*, and many

more. Kate's scenic painting can also be seen in other local theater productions and companies. She is a proud mom of three amazing, intelligent, talented girls and is thrilled to join her daughter Lucy in the cast!

SARAH MARSH (Shellhammer) is delighted to be part of this heart-warming holiday show. She loves the Santa Cruz theatre community and some of her favorite roles have been *The Realistic Joneses* (Pony Jones), *Noises Off* (Belinda Blair), *Mamma Mia!* (Lisa), *9 to 5 The Musical* (Roz Keith), *The Robber Bridegroom* (Salome), and various roles in the annual *8 Tens @ 8* play festival. A huge thank you to the *Miracle* cast, crew, tech, production team, and YOU, the wonderful audience joining us.

ANN McCORMICK-VICKERS (Mara) has been active in theater since 1994, providing behind the scenes support for her daughter's shows. In 2004, she followed her daughter onto the stage in MCT's melodrama, *Love on the Loathsome Stage*. Since then, she's performed in many more productions with MCT including *Love Letters*, *August: Osage County*, *Julius Caesar*, *Miracle on 34th Street*, *the Play* and *Rapture*, *Blister*, *Burn*, as well as *Grapes of Wrath*

SIGNAGE & ARTWORKS

IS NOW HERE IN FELTON
6062 Graham Hill Rd. Ste. D (next to the Sheriff)



When you need a sign, banner, poster, stickers,
vinyl graphics or artwork reproduction,
call Mardeen at 831-457-0115
or email mardeen@sa-aw.com



On display in the showroom

Embroidistry

minutely detailed artwork unlike anything else

Hand emboidered interpretations of well-known
masterpieces, album covers, photographs and
original compositions by Mardeen Gordon

giclee prints, partially embroidered giclees
and fully embroidered works

with Cabrillo College, *Last of the Red Hot Lovers* with LMSCJ Theater, *8 Tens at 8* and *Lucky Time* with Actors' Theatre, and *Crooked, Autobahn* and *A Delicate Balance* with Van Antwerp Theater. (headshot photo credit: Jana Marcus)

ADELIN McLAUGHLIN (Sharon) is thrilled to make her acting debut with MCT. When not busy with her third grade studies, she loves gymnastics, crafting and creating elaborate scenes for her dolls.

IRIS McLAUGHLIN (Dutch Girl) is delighted to be in her first production at MCT! She has been acting since age 5 in Santa Cruz and Monterey County. She loves listening to music and reading and hopes you enjoy the show!

SONIA MOTLAGH (Doris Walker) is excited to return to the MCT stage as Doris in *Miracle on 34th Street, the Play*. She was last seen at MCT as Mickey in *The Odd Couple (Female Version)*. Other acting credits from her time on the East Coast includes Linnet Ridgeway in *Murder on the Nile*; Lady Caroline in *Enchanted April*; Olivia in *Twelfth Night*; Nancy/Joyce Carol Oates in *Recent Tragic Events*; Annie in *Round and Round the Garden*; and Mrs. Cratchit in *A Christmas*

Carol. Sonia has experience acting in murder mystery dinners, role playing on government training programs, teaching acting classes and has dabbled in acting on film. Sonia has a degree in Theatre from Bethany College.

LOUIS NASH (Elf V) learned how to be an elf in his first appearance in the animated movie *The Polar Express*. He was the most human-looking one. Elfing comes easy to Louis having been fed gingerbread and peppermint sticks for his first 14 years. You may think you have seen him in such hits as *Elf* or *The Santa Clause*, but you would be wrong. He is happy to be off the shelf and in his first show at MCT.

SUSY PARKER (Rich Person, Megan's Parent, Newscaster, 2nd Pedestrian) started acting at age 8, when her mother told her she was "too dramatic" and put her in acting classes as a way to channel it. She's been acting ever since, most recently in the Santa Cruz *8 Tens @ 8* Festival, and playing Sylvie in MCT's production of *The Odd Couple (Female Version)*. She has also been in some indie films, including Robert Kirkendall's shorts *What's Hiding in Your Tree*, and *Escape from Jury Duty*, and the feature film *TWENTY*, directed by Hilary Davidson.



Mark your calendars for 2025!

REDWOOD MUSIC CAMPS

Teen Camp: 6/16-21

Kid Camp: 7/21-8/1

Adult Camp: 10/17-19

All located in beautiful
Santa Cruz County!



Descriptions, photos, and videos online at

CommunityMusicSchool.org

BRAD ROADES (Macy) won the Mimi Steinberg playwriting award at Brandeis University where he studied writing and directing with Martin Halpern, David Wheeler, Michael Murray, Edward Albee, Jayne Anne Phillips, Geoffrey Wolff and others. He has had his plays produced off Broadway in Boston and is a partner in the Whitefire Theater in Sherman Oaks, California. Locally Brad has worked with All About Theatre where he directed *Billy Elliot The Musical*, *Bat Boy The Musical*, *Spring Awakening*, *The Addams Family*, and *Chitty Chitty Bang Bang*. Brad also directed *Storytellers* for Next Stage. Brad appeared in *8 Tens @ 8* in 2024 in *Geronimo*. He last appeared at MCT in *Becky's New Car* as Steve.

AUTUMN ROBERTS (Elf Q) has been acting since they were an itty-bitty tiny baby child and has enjoyed working with many different theatre companies, including WEST theater, LPRT, and – of course – MCT. This is their second show with MCT and they are excited to dazzle you with their elfish elfness.

BENJAMIN ROTTE (Elf R, Elf Q Understudy) is a sophomore in high school. He has been in theater since the age of 8 in the

LPRT program, the all charter plays, and the SLV Theatre Department program. This is his first time performing with MCT, and he is very excited to be here.

SAVANNAH RUWE (Child No. 2, Joanie) is so excited to be joining MCT for the first time. Previous credits include *Treasure Island*, *Fractured Fairy Tales*, *A Year With Charlie Brown* and *Harry Potter and the Prisoner of Azkaban*. When not on stage, you might find her making skincare products and friendship bracelets.

CALI SPADACCINI (Elf Z) is so excited to be part of her first MCT production! She has been doing theater since she was 5. She has been in many productions for her school, LPRT, and more. When she is not on stage Cali likes to play sports, sing, and dance.

COREY SPADACCINI (Joanie's Parent, Bloomingale) is thrilled to make her acting debut in her first MCT production alongside her daughter, Cali. Corey graduated UCSC in 1999 and has lived in Scotts Valley for 15 years. She is passionate about live theater, enjoys being a theater mom, and has been a producer with Little People's Repertory Theatre since 2022.



OLLI

at
UC SANTA CRUZ

Learn... Socialize...



Community

Monthly Guest Speakers: gig economy, animal behavior, California coast, mariachi, native Americans, astronomy, microbes, photography, Oppenheimer

Expert-led Courses: Shakespeare, women's history, film, gender, foreign affairs, molecular biology, music, quantum mechanics, astronomy, grammar

Peer-led Interest Groups: architecture, bridge, capitalism, current affairs, restaurant dining, walking, recorder-playing, reading, sport, writing, photography

OLLI.UCSC.edu Meet new ideas! Make new friends! Stay curious!

PO Box 335
Capitola, California 95010
EMAIL: henrybosinger@gmail.com

Contractor Lic. 757839
Arborist Lic. WE-4320A



Quality Arbor Care

831-423-6441

Henry Bosinger

cell 831-818-0476



FAMILY OWNED & OPERATED SINCE 1971



MASTER TECHNICIANS

6281 Graham Hill Road

M - F 7:30 - 6:00

FOREIGN
DOMESTIC

831.335.5332



OWNERS

www.erniesservicecenter.com

SERVICE ADVISORS

ERNIE, RYAN & JOSH DEVONSHIRE

CHRIS & MELISSA

CHRISTINA WISE

(Judge Harper) is pleased to be playing the role of Judge Harper following a number of recent performances with MCT in 2024: Hoolya Costazuela in *The Odd Couple*, a chair-sitter in *Becky's New Car*, and Carmen in New Works Weekend's *Giving Up Smoking*. The warm welcome from the MCT family has proven intoxicating, and Christina looks forward to spending more time supporting this local community treasure.

ROB WOJTASIEWICZ (Duncan, Street Person & 1st Pedestrian Understudy) has been involved with MCT for ten years. Usually he's behind the scenes but occasionally he wanders onto the stage. His true passion is writing, and he's currently working on a couple of very interesting projects.

MAIA YATES (Halloran) began her acting career at 6 years old with LPRT till age 14 and participated in numerous middle and high school productions under the direction of Will Guilford at SLV. Her experience also includes MCT shows such as *Monty Python's Spamalot*, *The Rocky Horror Show* (as Dr. Scott), *A Flea in Her Ear* (as Olympia), *A Christmas Show*, and *The Robber Bridegroom* (in the role of Eudora Welty), among others. In her personal life, Maia is a mother to Johanna, a stepmother to Brayden, and the wife of Scott Yates. In her free time, she enjoys sleeping. Additionally, she leads the Diversity and Equity team for the MCT board. Thanks to her family and friends for the constant support and LOVE. Thank YOU for supporting live theater and this heartwarming production this season! Cheers!



Proud to be your local plumber.

831 425-1131

santacruzplumbinginc.com

Trusted Expertise in SLV Properties for over four decades

13 times Press Banner "Fave" Realtor!



Ronnie
TRUBEK
Your Neighbor, Your Real Estate Professional

(831) 818-4233
ronnietrubek.com

CENTURY 21
Showcase, REALTORS
BRE#00782879



Made-To-Order **SANDWICHES**
SALADS & SIDES
Organic **PRODUCE**
SUPPLEMENTS &
BODY CARE

**WILD
ROOTS**
MARKET

Felton • Boulder Creek
wildrootsmarket.com
7 days a week | 9am - 9pm

BEST LOCALLY-OWNED MARKET IN SAN LORENZO VALLEY

PRODUCTION TEAM BIOS

SIIDNEY BOBISUTHI (Stage Manager) has been working as a stage manager in the Santa Cruz theatre community for four years now while attending high school in Ben Lomond. Their past shows include Actors Theaters' *8 Tens @ 8* play festival, as well as their most previous work on MCT's *Evil Dead the Musical*. They are very excited to expand their horizons with MCT's *Miracle on 34th Street, the Play*, and are happy to be working with such an amazing and kind cast and crew.

LARS FABIUNKE (Technical Director, Set Designer) supported the SLV Theatre Department for many years as a set designer, builder, painter and prop maker, and finally decided it was time to leave the comfort of the "home stage" and set out to support MCT. Some of his credits include *The Winds of Beyond, The Bold, the Young, and the Murdered, Chicago, Little Shop of Horrors, Legally Blonde the Musical, Disney's Beauty and the Beast, Evil Dead the Musical* (at MCT), and prop master on the set of *The Outlaws*. Glædelig jul og godt nytår! Frohes Fest und ein Gutes Neues Jahr!

PAUL FARAONE (QLab Operator) is excited to be part of the MCT for the first time. He has been a "green room" dad for his son for the last three years in multiple theatrical plays; he's excited to be part of it himself. Paul is part owner of a local eatery River Dogs and also part of Ember Flash Aerospace. He's part of a team working on wildfire detection and suppression technologies for our growing wildfire threat.

KAREN SIEBALD (Sound Designer) is volunteering for the first time MCT! Karen is happy to return to theater after too many years away, and looks forward to volunteering more in the future. Credits include Assistant Director for *Enlightenment* and Director for *Hope on a Rope* in UCSC's Chautauqua seasons 2006 and 2007.

DARIA E. TROXELL (Director) recently returned to MCT after a 6-year hiatus, and currently serves as Vice President of the MCT Board of Directors. Previous MCT directing credits include *It's a Wonderful Life, How to Succeed in Business Without Really Trying, Young Frankenstein*, and *9 to 5 The Musical*. She is the resident director for Little Peoples'

Art Services

by Steve & Mary Lanctot



831-338-3232

**Tuesday –Saturday
10:00 am –5:00pm**

Custom Picture Framing

**Museum Quality Picture Framing
Memory Shadow Boxes
Unusual Projects
Needlework Specialists
Local Artists Exhibits**

Serving SLV for 42 Yrs.

**6222 Highway 9
Felton CA, 95018
Next to Liberty Bank**



Support Boulder Creek,
the town that supports the arts.



Community Planning Event • Town Sweeps • First Friday Art Walk • July 4th Parade • National Night Out
Downtown Trick or Treat • Winter Festival
Town Beautification • Historic Preservation • Community Vitalization

Repertory Theatre (LPRT), for which she has directed twelve productions, and is co-directing *Grease* at SLVHS, which opens March 2025. She has appeared in several MCT productions, including *Harvey*, *Miracle on 34th Street*, *the Play* (2010 and 2012), *August: Osage County* (2014), *The Last Noel* (2015) and most recently as Sonia in *Vanya and Sonia and Masha and Spike* (2017). She loves her kids to the moon and back and appreciates their continued support. (headshot photo credit: Jana Marcus)

WYATT E. TROXELL (Production Manager, Lighting Designer) is an actor, musician, and designer who has worked with several local organizations (San Lorenzo Valley High School [SLVHS], Mountain Community Theater [MCT], Little People's Repertory Theatre, Jewel Theatre Company, Santa Cruz Actors' Theatre, and Renegade Theater Co.), in a variety of capacities (actor, lighting designer, technical director, stage manager, board operator, musician, or master electrician). Wyatt recently performed in MCT's *Something Rotten* as Nigel Bottom, was the Vocal Director for SLVHS's Disney *Beauty and the Beast*, and played the role of Jason Dean, and was the Technical

Director, for Renegade Theater Co.'s production of *Heathers*. He wants to thank all the volunteers who helped to put this show together and hopes you enjoy an MCT classic, *Miracle on 34th Street*, *the Play!*



Good morning Monterey Bay with Rosie and Bill
M-F 6 a.m. to 9 a.m.



Santa Cruz
VOICE
SantaCruzVoice.com



MOUNTAIN MUSIC SCHOOL

MUSIC LESSONS FOR ALL AGES

LOCATED IN SCOTTS VALLEY



(831)201-9605

MountainMusicSchoolSV.com



AT THE SANTA CRUZ MOUNTAINS ART CENTER

There's Always More to Learn!

Check out our year-round art classes for adults, as well as classes for kids and teens offered at several local schools and at the Art Center in Ben Lomond.

Visit our website for details and to register:

www.MountainArtCenter.org



SANTA CRUZ MOUNTAINS
ART CENTER

9341 Mill Street, Ben Lomond, CA 95005

CANDERSON
CHRISTIE

*Let me and my team
work for you!*



CHRIS CLAYTON

831-588-8078

cclaytonhomes@gmail.com

DRE LIC #01407021

WE
LOVE
THE
Arts!

It's a pleasure to
donate to the
organization of your
choice when you
buy or sell with me!


CHRIS
CLAYTON
REALTOR

www.chrisclaytonhomes.com

ALWAYS PROUD TO SUPPORT OUR COMMUNITY



Your Favorite Local Nursery, Garden, Pet and Livestock Supply Store

9550 Highway 9 Ben Lomond

831-336-8876

www.mountainfeed.com

Goodman Graphics

Creative Design and Marketing

Creating Designs that Connect and Marketing that Inspires Action

We help with a variety of design & marketing solutions for:

**Consumer
Packaged Goods
(CPG)**

**Website/Digital
Design and
Development**

**Email Marketing,
Print Collateral,
& Digital Content**

Celebrating 30 years serving Santa Cruz County and the greater Bay Area

-----* (831) 251-9518
www.goodman-graphics.com



BEN LOMOND DENTAL CARE

Oana I. Carnu, DDS, PhD

9377 Mill Street

Ben Lomond, CA 95005

phone: 831-336-2271

email: benlomonddentalcare@gmail.com

web: www.benlomonddentalcare.com

Unite for Our Valley's Well-being!

Partner with us to conserve the San Lorenzo Valley's environment and strengthen our community.



Become a member at

www.ValleyWomensClub.org

Our members, volunteers, and contributors make all of this possible:

- Redwood Mountain Faire
- Environmental & Education Programs
- Native Habitat Restoration Program
- Teacher's Grant & Scholarship Program
- Environmental Town Hall
- Annual River & Road Clean Up
- SLV Caregiver Support Group
- Legacy of Trees Donation Program

The logo features a cartoon character with a wrench and a screwdriver, sitting on a large oval that says "KEN'S AUTO BODY & STRIPING". Below this, it says "SANTA CRUZ" and "kensautobodyandstriping.com".

Ken Heredia

(831) 462-0698
Fax (831) 462-9801

1226 Brommer St.
Santa Cruz, CA
95062

Auto Body & Striping

Autobody Repairing & Repainting - Windshields - Auto Glass
Freehand Pinstriping Services - Insurance Work Welcome

The I-CAR logo is located in the bottom right corner of the advertisement.

SCARBOROUGH LUMBER

Proud sponsor of the Mountain Community Theater

SERVING OUR
COMMUNITY FOR
OVER 65 YEARS

The logo shows a person in a hat and work clothes sitting on a large log. The words "Scarborough LUMBER" are written on the log.

VISIT US AT
WWW.SCARBOROUGH LUMBER.COM



Auto Body & Towing



"Hooking up" the Santa Cruz Mountains
and beyond since 1980

Towing • Auto Body • Off Road Recovery • Commercial Accounts

24 Hours a Day

6085 Hwy 9 Felton, CA 95018

Towing (831) 335-2222 Auto Body Shop (831) 335-0868

Family Owned Since 1958

NORTH GLASS



Windows & Doors, Inc.

105 Main St.

Ben Lomond, CA 95005

Lic. #175307

(831) 336-2288

www.northglass.net



The Abbot's Thrift

Retail Store

Donation Center

Electronic Recycling

Clothing, Electronics, Housewares, Antiques,

Art, Collectibles, Furniture, Treasures

6164 Hwy 9, Felton, CA 95018

831-335-0606

theabbotsthrift.org

BUY, SELL & TRADE

VINYL

CDs DVDs BLU-RAYS VIDEO GAMES



SAN JOSE

980 S BASCOM AVE.

(408) 292 - 1404

WWW.STREETLIGHTRECORDS.COM

SANTA CRUZ

939 PACIFIC AVE.

(831) 421-9200





Christina Wise

Mobile Notary Public

christinawisenotary@gmail.com

831-588-0540



The Dancing Crane

ACUPUNCTURE & HERBAL MEDICINE

Julie Broder, L.Ac., MTCM

12704 Highway 9
P.O. Box 201 (mailing)
Boulder Creek, CA 95006

Ph/Fax (831) 338-8033
dancingcrane@cruzio.com

Scopazzi's

831-338-4444

831-338-6441

Fax 831-338-6442

Talal Janbay
Owner-Manager

Paul Violante
Chef-Owner

13300 Big Basin Highway

Boulder Creek, CA 95006

Emile's

SPORTS CAR PERFORMANCE



Emile Dell'Aquila

831.479.1588

3501 Portola Drive
Santa Cruz, CA 95062

emilessportscarperformance@gmail.com

OUR 2025 SEASON



MAR 21-APR 13

Steel MAGNOLIAS

By Robert Harling
Directed by Peter Gelblum

MAY 16-JUN 8

THE CURIOUS INCIDENT

OF THE DOG IN THE
NIGHT-TIME

Based on the novel by Mark Haddon
Adapted by Simon Stephens
Directed by Simon Hayward

SEP 19-OCT 19

The Addams Family

A NEW MUSICAL
COMEDY

Book by Marshall Brickman and Rick Elice
Music and Lyrics by Andrew Lippa
Based on Characters Created by Charles Addams
Directed by Daria E. Troxell

NOV 21-DEC 14

A Midsummer Night's Dream

By William Shakespeare
Directed by Stephen Phillipps

NEW WORKS WEEKEND

AUG 15-17

Produced by Ian Dyer



Since 1982 - the longest
running theater in
Santa Cruz county!

MCTSHOWS.ORG

